

RIVER OUSE, DONKEY WOODS



YDAA control the fishing on the right bank from the top of the sand bed on Middlethorpe bend to the stile just before the Archbishops Palace.

The fishery is split into two by the York outer ring road.

Night fishing is not allowed.

Day tickets are not available as this is a member's only water.

© Copyright [JThomas](#) and licensed for [reuse](#) under this [Creative Commons Licence](#)

This section starts at the top of the sandbed where the river is relatively shallow and then varies in depth, some of the deeper pegs being just above the road bridge.

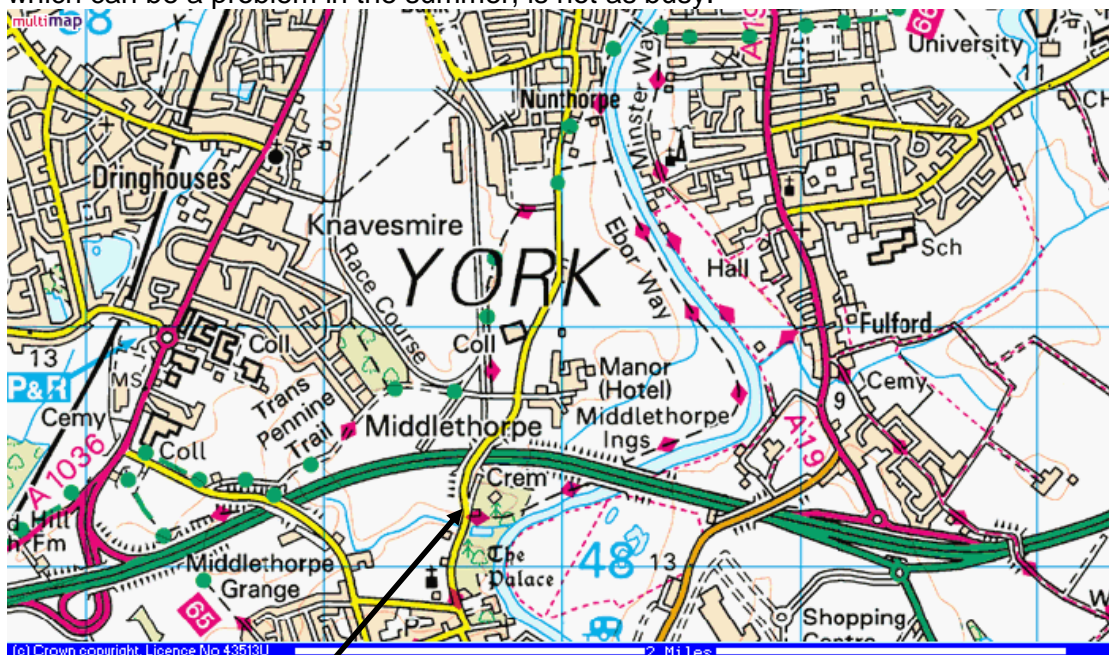
Large catches of bream can be caught throughout the length but the favoured spots are in the tall trees above the road bridge, or around the culverts when the river is high.

The sandbed can produce excellent sport with roach and perch throughout the season to stick or waggler using caster, maggot and hemp.

For the bream, favourites are a ground bait feeder cast a third of the way across using plenty of casters and chopped worm.

The pole with caster and maggot can be effective on the day.

The venue is popular as a match fishery especially in the winter when the river traffic, which can be a problem in the summer, is not as busy.



Parking here

Travelling from York, leave the city using Bishopthorpe Road. Go past the racecourse over the ring road and then turn left, just after the bridge into the crematorium car park

WARNING: This car park is locked overnight. When fishing on an evening, park on the roadside.

The entrance to the fishery is via the public footpath down the side of the palace grounds turning upstream when the river is reached. YDAA water starts at the first fence.

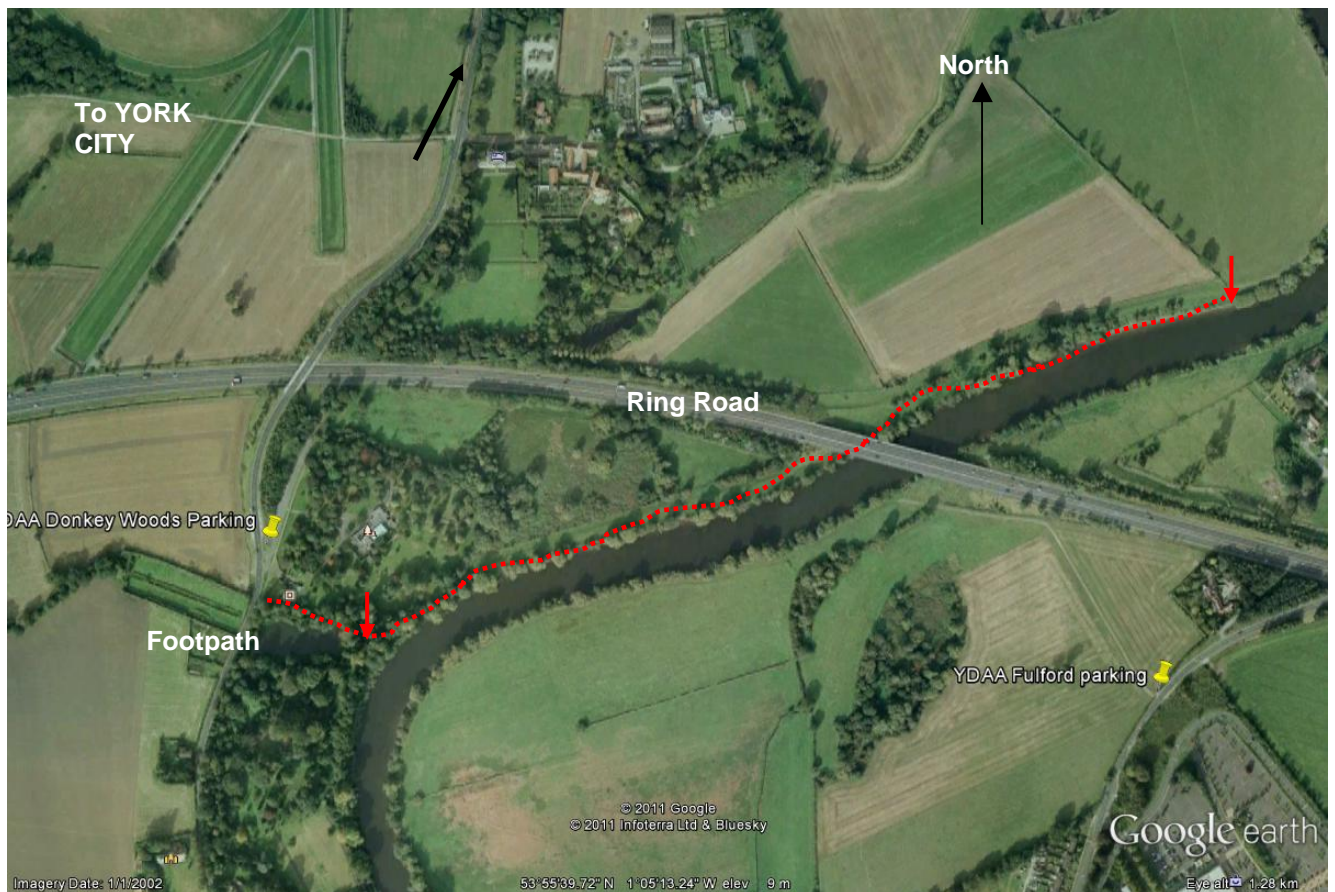
It is a good long stroll to the top end.

Grid ref map information

Latitude 53°55'36.44"N

Longitude 1° 5'37.65"W

Postcode district: YO23 2



 **Denotes limits of Fishery**