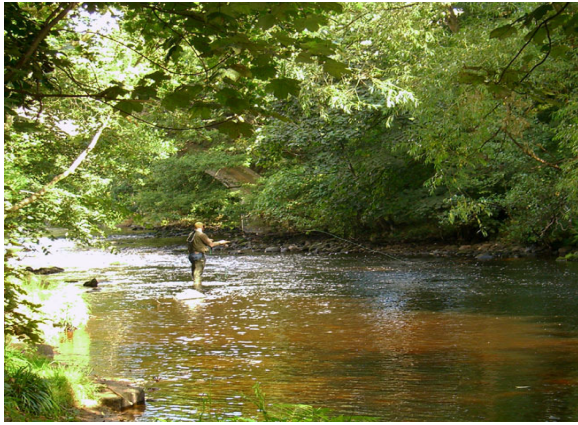


RIVER NIDD.KNARESBOROUGH.



Approximately one and a half miles in length.

Day tickets are available from the usual outlets.

Night fishing is allowed by prior arrangement via the Waters Secretary.

A lightly fished, one and a half mile section dominated by deep, slow glides interspersed with occasional stretches of fast shallow water.

Few established pegs so suit's a roving approach. Occasional brown trout are taken.

Plentiful chub, grayling, and good-sized dace; barbel are present but location can be difficult. In 1977 a fine 12lb 11oz specimen was captured.

Responds well not only to a running line and maggots but also the fly.

This is one of York's most lightly fished stretches and holds many secrets for the explorer.



From York take the A59 to Knaresborough, turning left at ring road onto the A658.

Park on the roadside, in the lay by, or in front of the access gates approximately 400 yards from the roundabout.

After walking through the gates, follow the wire fence to the river side. Walking upstream takes you under the road bridge to the upstream limit at the sewerage treatment works.



Follow overgrown path at the side of the wire fence for approximately 100 yards until you come to the river

Park here keeping gate way clear

Make sure the gate is closed after use.

Grid ref

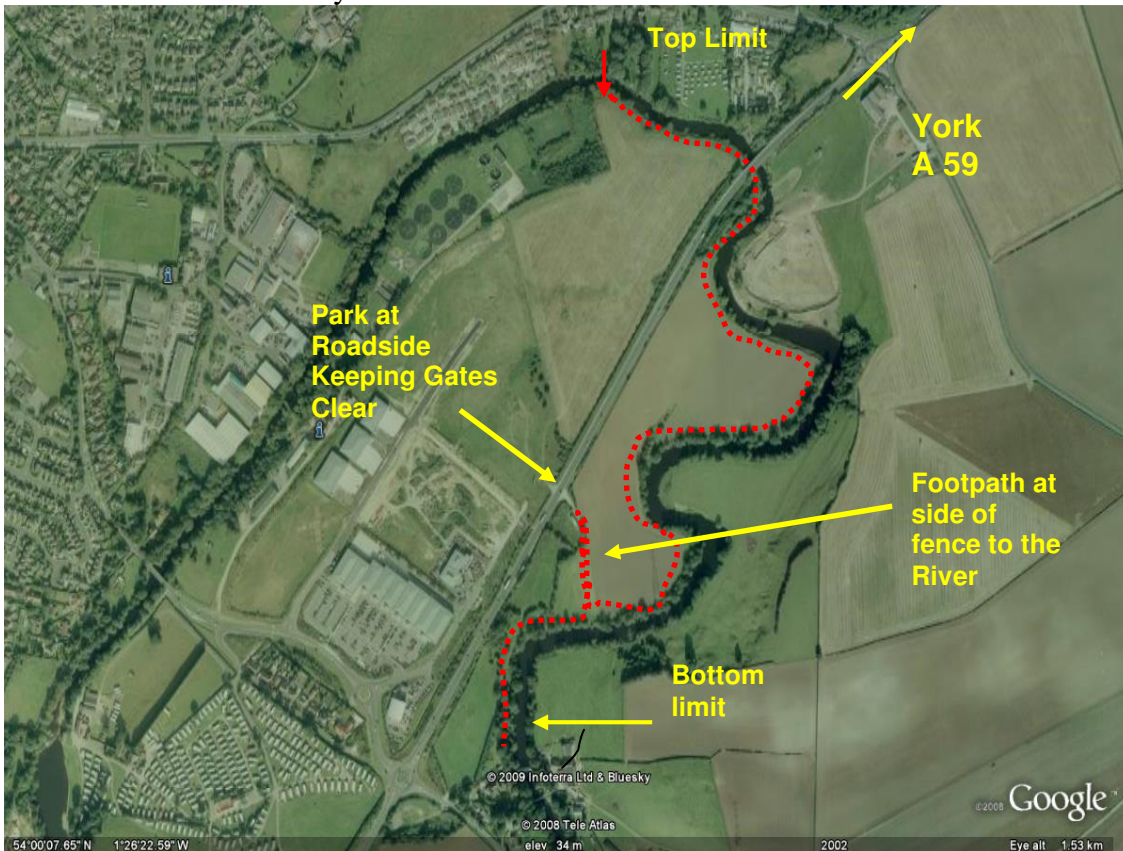
Latitude 54:00:00N

Longitude 1:25:51W

Postcode district: HG 5 8



Denotes limits of Fishery



North

