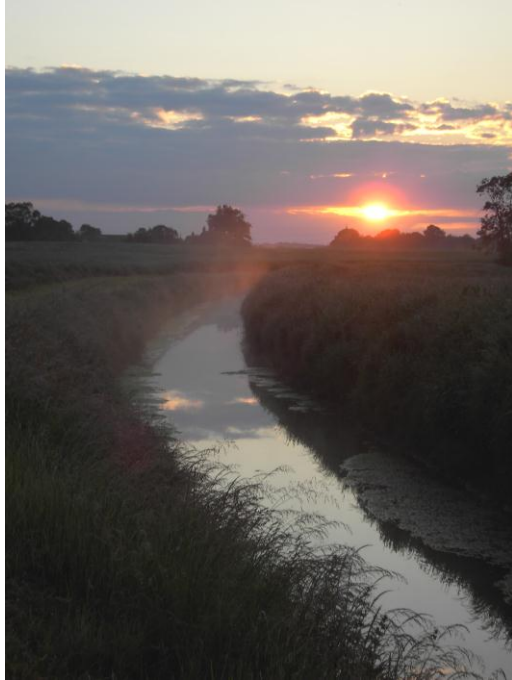


## RIVER FOSS. STRENSALL AND TOWTHORPE.



YDAA control fishing on the following sections.

Access is gained via the public footpath.

Members only.

### Strensall.

Approximately 1500 yards, upstream from the road bridge to the notice board.

### Towthorpe.

Both right hand and left hand banks from Towthorpe Bridge to Newstone Bridge.

### The River Foss at Dawn.

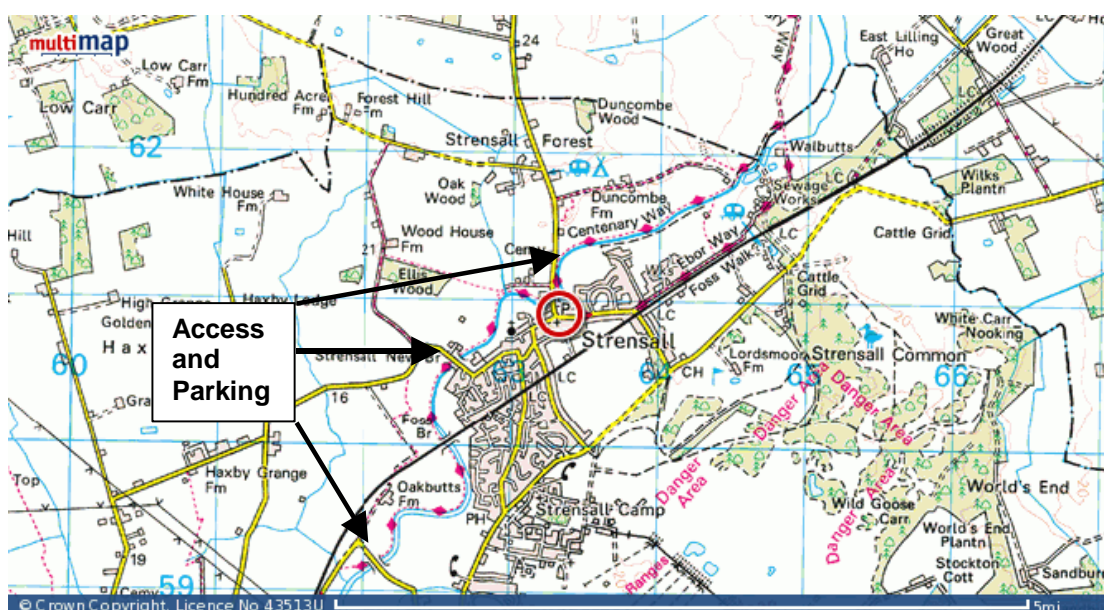
One of York Amalgamations hidden gems.

Dace, chub, gudgeon and roach are the predominate species in this small river. The water is little fished and stealth and watercraft are needed for good results. This is no commercial but holds plenty of fish and many surprises.

In recent years a good number of barbel have been introduced and these have been packing on weight in the rich environment waiting to surprise the unsuspecting angler.

Free lined baits can take the larger chub, but for the best results, try a light trotting float with maggots, caster or bread for sport with a variety of fish.

Watch out for the numerous pike taking hooked fish.



Travelling from York, take the B1237 ring road turning off at the roundabout signed for Strensall.

As you pass the Army camp on your right hand side, access to the river is gained by the side roads to the left.

In the village of Strensall follow the main street and turn left over the hump backed Bridge and Park adjacent to the old tannery. Limited Parking is available at the other road bridges.

**Grid ref**

**Latitude 54:02:24N**

**Longitude 1:02:04W**

**Postcode district: YO32 5**

↓ Denotes limits of Fishery

