

BURN ROAD POND.



A small pond of less than an acre, located on the road to the village of Burn, just to the south of Selby.

Members Only

No Night Fishing.

Please close the gate after arriving and when leaving the pond.

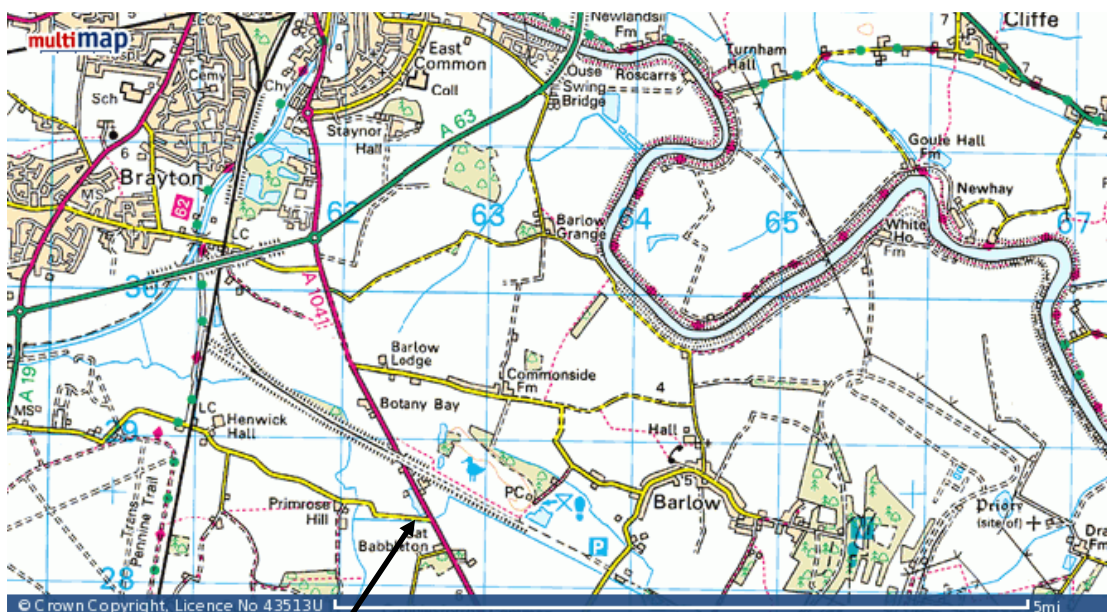
Roach, bream, tench and perch are the main species; the pond has a reasonable head of pike that go to double figures.

Maggot and caster can usually be relied upon for the roach, with caster generally drawing the larger specimens. Hemp works really well at this venue.

Bream and tench can be had on maggot, caster, worm and corn, and both species respond well to moderate ground baiting. At one time strawberry jelly was the catching bait!

Swims are comfortable and easily accessed, and many have solid platforms to fish from. Try fishing close to the many weed beds during summer.

As the pond is so shallow, maximum 5-6 ft, a waggler rod or pole is usually all that is required to catch the majority of species.



**Park in Car
Park. Please
close the Gate**

From York take the A19 towards Selby. At the roundabout at Barlby take the A63, and carry straight on at the next roundabout, over the River Ouse and at next roundabout take the first left on to the A1041. The turn for Burn Road is just over a mile down the A1041 on the right hand side, and the gate for the pond itself is on the right hand side, a 100m further on. There is parking for six or so cars in the car park.

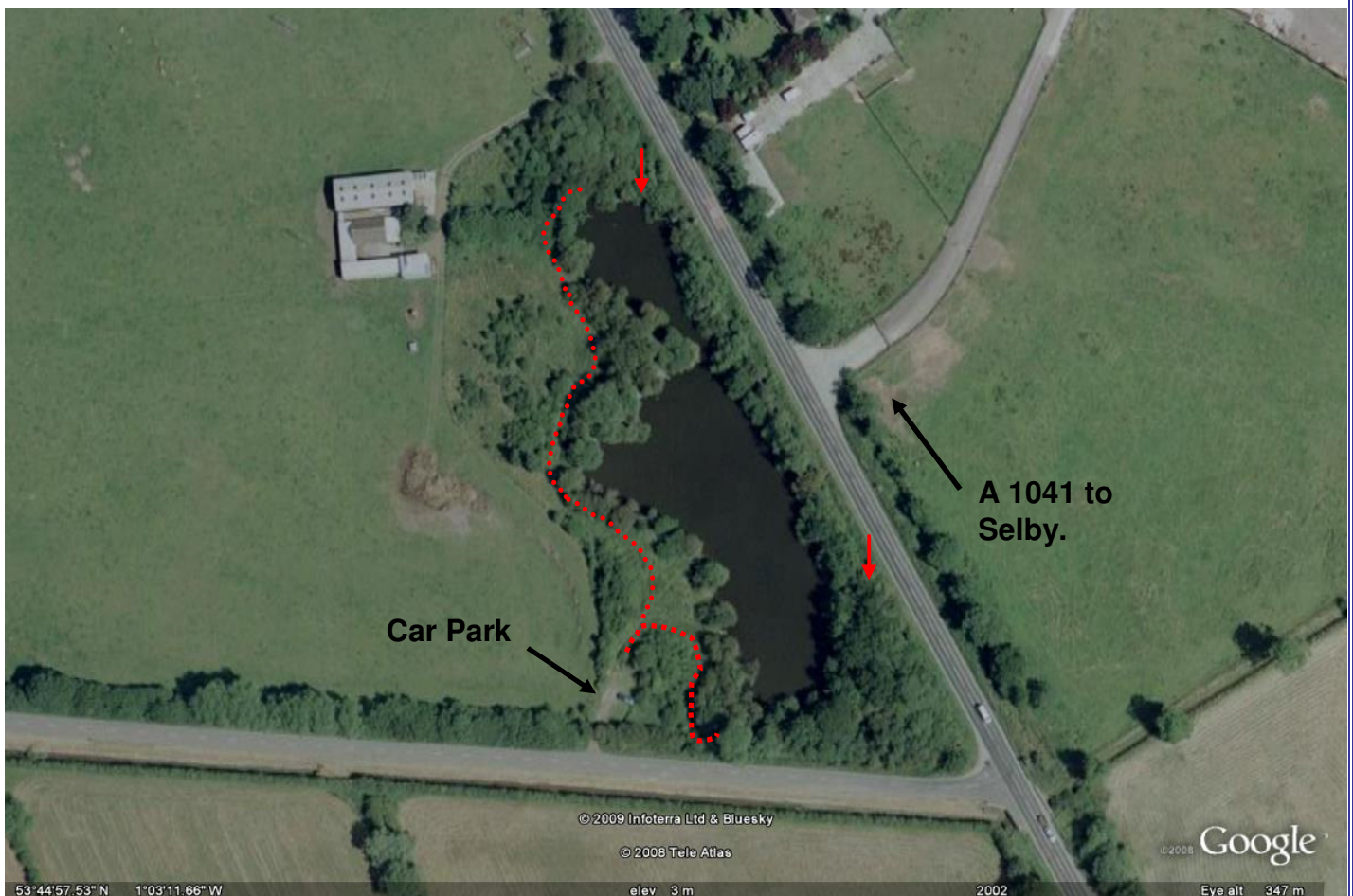
Grid ref

Latitude 53:45:15N

Longitude 1:04:21W

Postcode district: YO8 8

↓ Denotes limits of Fishery



North

