

## BARTON HILL BECK



Members only

No day tickets.

Night fishing is not allowed.

Open for fishing with worm, fly or minnow during the coarse close season.

A rarely fished natural stream, consisting of sections of fast shallow water with deep glides.

The water is very shallow and clear. The venue suits a roving approach.

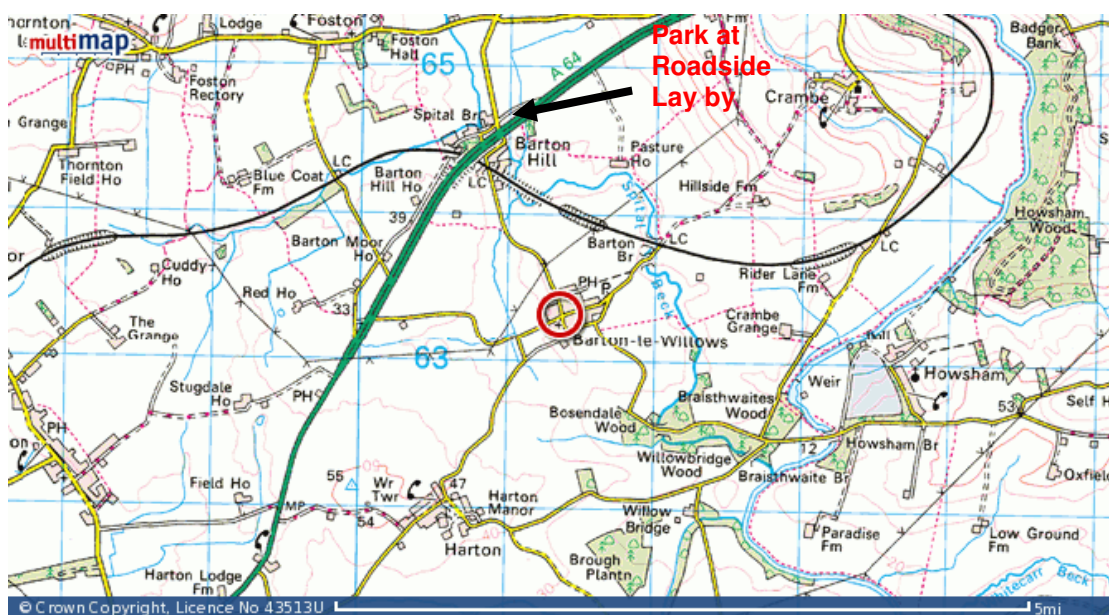
Occasional brown trout are taken.

Small fish such as dace, gudgeon and chub provide interesting sport requiring great stealth and watercraft. Concealment is the key on this fishery.

Occasionally a larger specimen may be discovered and the challenge will be to catch them in such an intimate environment.

Responds well not only to a running line, with maggots or worm but also the fly.

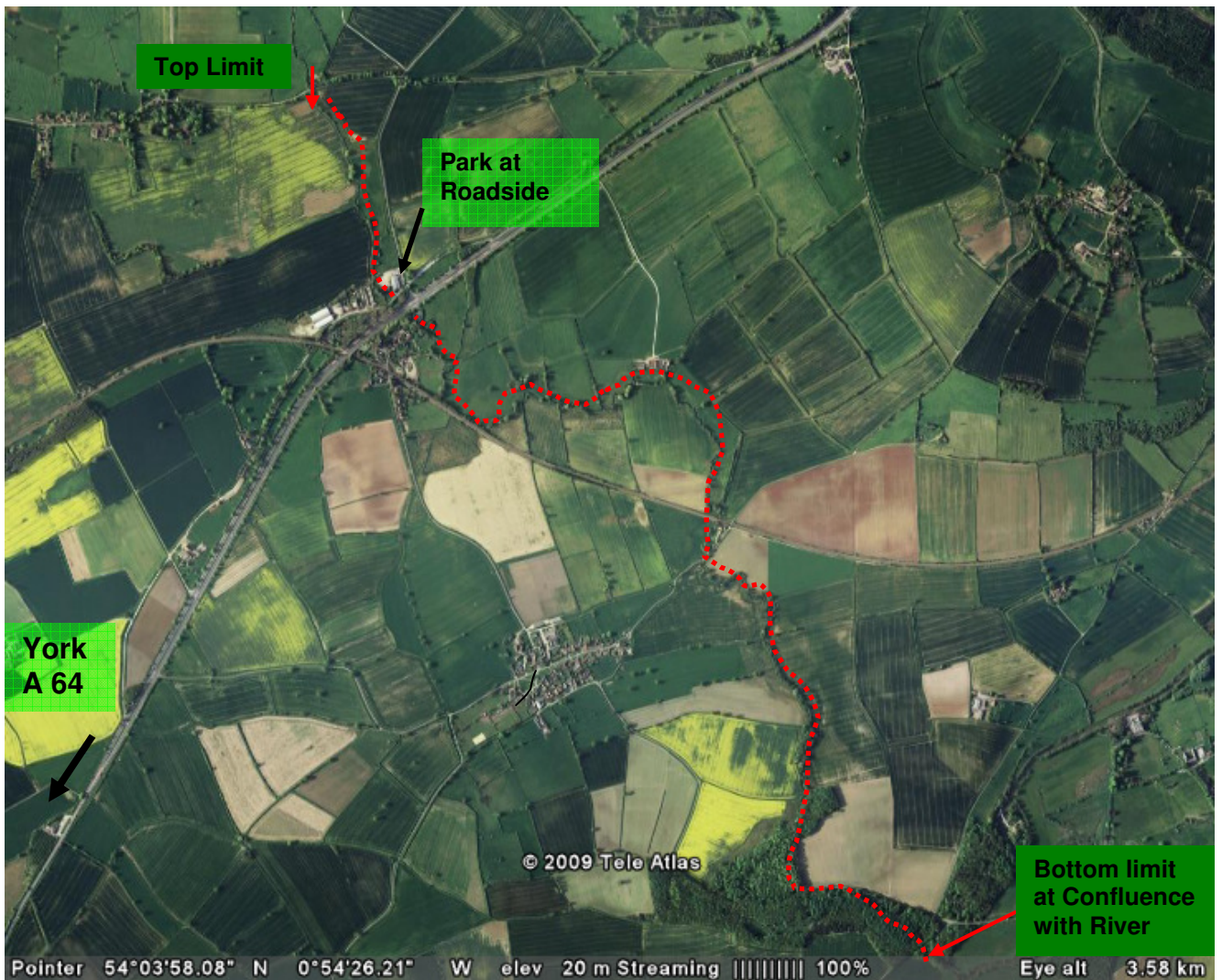
This is one of York's most neglected stretches and could hold many secrets for the explorer.



From Standing Beck down to Foston Bridge, then from Spital Bridge to one field upstream of the railway, then from Splashwater Bridge to second plantation.

**Grid ref**  
**Latitude** 54:03:40N  
**Longitude** 0:53:36W  
**Postcode district:** YO60 7

↓ Denotes limits of Fishery



North  
↑